

# Partneriaeth yn ystod amseroedd anodd

## Partnership during difficult times

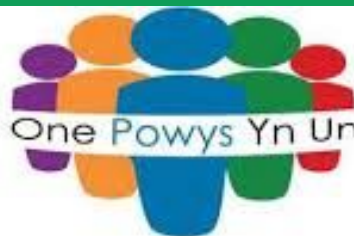


GIG  
CYMRU  
NHS  
WALES

Bwrdd Iechyd  
Addysgu Powys  
Powys Teaching  
Health Board

Bwrdd Partneriaeth  
Ranbarthol Powys


Iechyd a Gofal  
Cymdeithasol



Powys Regional  
Partnership Board

Health and  
Social Care




# Beth yw PAVO? What is PAVO?



What is  
Beth yw

# PAVO?

Powys Association of Voluntary Organisations  
Cymdeithas Mudiadau Gwirfoddol Powys



# Cipolwg o Bowys...

## A Snapshot of Powys...

**Powys' Total Population: 132, 435**

<b>Age Group</b>	<b>2014</b>	<b>2019</b>
<b>Working Age (16-64)</b>	77,200	73,500
<b>75+</b>	15,100	17,600



**One Health Board  
One Local Authority  
One CVC.....**

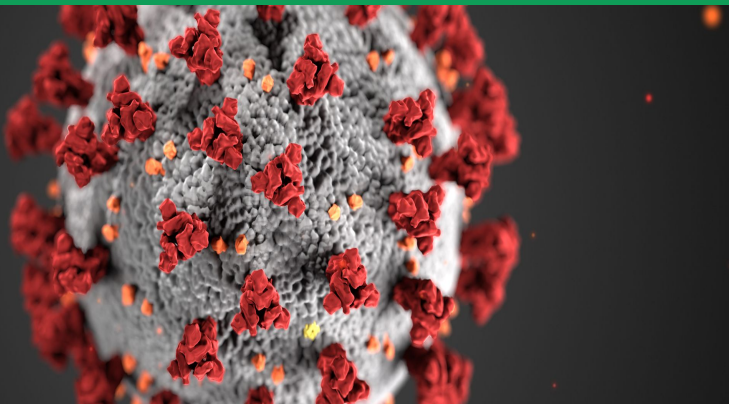
**How many voluntary organisations in Powys?**

# Yr Ymateb Argyfwng

Datblygu darpariaeth ataliol yn y gymuned i  
gefnogi'r boblogaeth sy'n gwarchod

## The Emergency Response

Developing **community based** preventive  
provisions to support the shielding  
population



# Community Sector

## Emergency Response Team

- Support & coordination of voluntary action via 13 Community Connector support networks
- Support for 112 Community covid groups
- Support of individuals via Community Connectors & Powys Befrienders Service
- Recruitment of formal Health & Care Volunteers
- Provision of essential information
- Distribute funding for community based covid related activity

# PAVO Community Connectors

**7341** referrals (April 20 to March 21)

**3532** new clients into the service

**3187** Adult Social Care / Welfare Calls

**2537** self referrals

**521** referrals via health inc GP's

**278** homelessness support referrals

**818** other

**11,928** requests made or signposts to the community and voluntary sector for support our clients

**909** people signposted to private businesses for support

**1480** referrals or signposted to statutory services



## Beth ddyweddod ein cleientiaid?

## What did our clients say?

- 100%** were satisfied with the support received
- 100%** said the connector treated them with dignity and respect
- 94%** of people said they were able to access information etc to some extent
- 90%** felt the community is able to support their health & well being to some extent
- 96%** felt they were responsible for their own health and wellbeing

## Who would you have gone to for support if you had not had contact with the Community Connector Service?

**23.64%** No-one - I would not know who to contact

**12.73%** No one - I would have waited for things to get worse

**10.91%** Other third sector groups

**30.91%** Statutory services

**14.55%** Family

**7.27%** Other

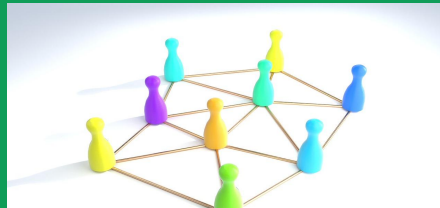


# Powys Social Value Forum

What is it? What does it do? Let's find out!

# Objectives of the Powys Social Value Forum

- **Networking**
  - Find solutions to enhance and support the implementation of the Social Services and Wellbeing Act, and strengthening links to other legislation and policy priorities.
- **Co-production**
  - Develop and promote opportunities for alternative delivery models to provide preventative and social care and well-being services that improve wellbeing outcomes.
- **Community engagement**
  - Play a role in supporting the review and monitoring of population assessments and area plans.



# Community Sector Response Group

Meets quarterly to  
coordinate action,  
consists of:



# Volunteering in Powys



*WCVA (2016) Volunteering in Wales  
2015: Report on two Omnibus surveys  
March 2014 and 2015'*



The number of **formal** volunteers by  
local authority area (16+)

Powys	??	??
-------	----	----

Wales	37.0%	931,261
-------	-------	---------

The number of **informal** volunteers by  
local authority area (16+)

Powys	??	??
-------	----	----

Wales	64.1%	1,627,304
-------	-------	-----------

- 428 volunteers signed up
- Currently 206 active volunteers
- 28567 volunteer hours given
- Equivalent of 4081 working days @ 7 hours per day
- Equivalent of 816 weeks @ 5 days a week, 7 hours per day





# WE NEED YOU

**VOLUNTEERS  
NEEDED AS  
WAYFINDER  
MARSHALLS**

**AT THE MASS  
VACCINATION  
CENTRES IN:**

**NEWTOWN**

**BUILT  
WELLS**

**BRONLLYS**



**RECRUITING  
NOW**



**MINIMUM 2 HOUR SHIFTS.**

**SUBJECT TO WELSH GOVERNMENT  
COVID-19 RISK ASSESSMENT.**

**MANDATORY TRAINING, PPE &  
DBS CHECKS PROVIDED.**

**CONTACT PAVO:**

**01592 822131**



**Pavo**  
 Recruitment  
 & Training  
 Ltd  
 100, The Quadrant,  
 Bournemouth, Dorset,  
 BH1 1AB  
 Tel: 01202 619100  
 Email: [info@pavorecruitment.co.uk](mailto:info@pavorecruitment.co.uk)  
[www.pavorecruitment.co.uk](http://www.pavorecruitment.co.uk)






## JOIN OUR TEAM OF WAYFINDER MARSHALLS!

Could you spare a couple of hours a week to support the booster programme roll out?

"I volunteered as I wanted to help and be part of something that would make a difference to so many during such a difficult time. I've enjoyed every aspect of my volunteering role"

*Mike, Wayfinder Marshall, Newtown*

To join our team contact PAVO:

☎ 01597 822191

✉ [volunteeringmassvacs@pavo.org.uk](mailto:volunteeringmassvacs@pavo.org.uk)



All events are subject to availability. Events are subject to change without notice. We are not responsible for any damage, injury or loss. We are not responsible for any damage, injury or loss. We are not responsible for any damage, injury or loss.

# Hospital Support Volunteers

## Volunteers needed to support our hospitals !



Are you kind and compassionate, confident and encouraging, have good communications skills, can work as part of a team and understand the need for discretion and confidentiality? **You could be a hospital support volunteer!**

**Your local hospitals in Welshpool, Llanidloes, Llandrindod Wells, Machynlleth and Bronllys need you!**



**Volunteers will need to:**

- pass a Covid workplace risk assessment
- undertake an enhanced DBS check
- complete a programme of online training



**Can you help? For information:**

 01597 822191  [volunteering@pavo.org.uk](mailto:volunteering@pavo.org.uk)

 <https://volunteering-wales.net/> Search for 'Hospital Support Volunteers'



GIG  
CYMRU  
NHS  
WALES

Bwrdd Iechyd  
Addysgu Powys  
Powys Teaching  
Health Board



PAVO



PVC  
CANOLIAN GWIRYDDOLU POWYS  
POWYS VOLUNTEER CENTRE

- First face to face opportunity since the commencement of the pandemic
- 5 local community hospitals currently
- Volunteers will act as a motivator, befriender or support to the patients and staff of the ward or department
- Working closely with NPTC and High Schools



Academi Iechyd a Gofal Powys  
Powys Health and Care Academy



Ysgol Gwirfoddolwyr  
a Gofalwyr  
School of Volunteers  
and Carers

# Powys Health & Care Academy School of Volunteers and Carers

Increasing local access to education,  
training and development across the  
health and social care sector,  
specifically focused on the workforce  
in Powys.



# Bywyd ar ôl Covid19 Cefnogi pobl a chymunedau i deimlo'n ddiogel

## Life after Covid19 Supporting people and communities to feel safe

Ongoing support to individuals and groups  
and increasing volunteering

Continued work with statutory partners

Networking - Dementia, Mental Health,  
Agri Wellbeing, Advocacy, Community  
Transport, Village Halls, Trustees,  
Volunteer Involvers

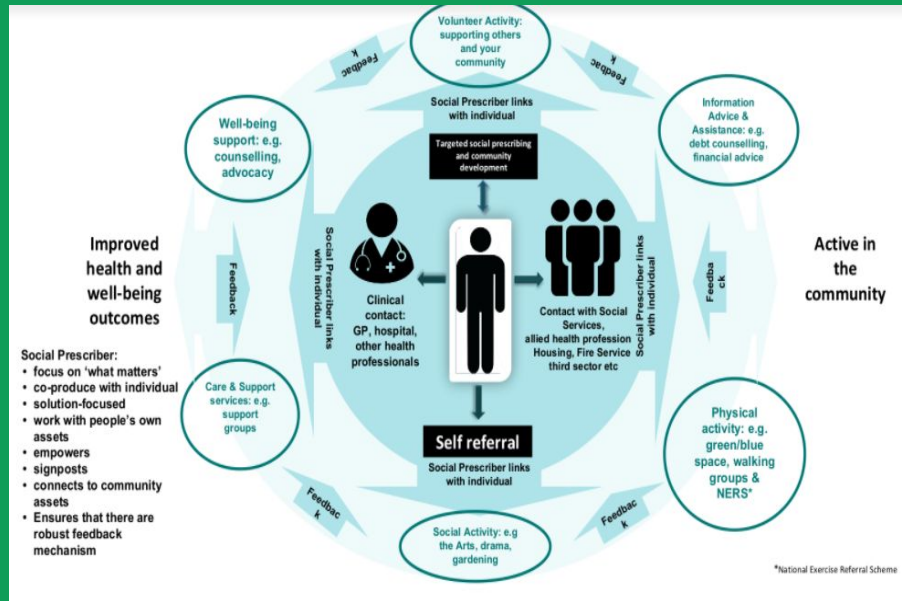
Information Sharing - best practices, covid  
safe return to activity delivery

Information bulletin and blogs

Grass roots networking through network  
development officers



# Social Prescribing - Delivering the Powys Community Connector model



Social prescribing in Wales is defined as 'connecting citizens to community support to better manage their health and well-being' (Rees et al, 2019). It is a person-centred approach to empowering an individual to better manage their health and wellbeing through a number of activities (SCIE, 2020).

Understanding Social Prescribing in Wales - A Mixed Methods Study  
[http://www.wsspr.wales/resources/PHW\\_SP\\_Report\\_FINAL.pdf](http://www.wsspr.wales/resources/PHW_SP_Report_FINAL.pdf)

# How can the third sector work effectively with health and social care?



## Developing our partnership approach

- Welfare calls for people waiting for care
- Daily Delivery Coordination Meetings
- GP Primary Care Clusters
- Homelessness Cell
- Patient Flow
- Social Services screening panel
- Care Practitioners Forum (panel)
- D2RA - Home First
- Regular cross sector meetings
- Formal volunteering opportunities

## Challenges?



*Diolch yn fawr - Thank you*