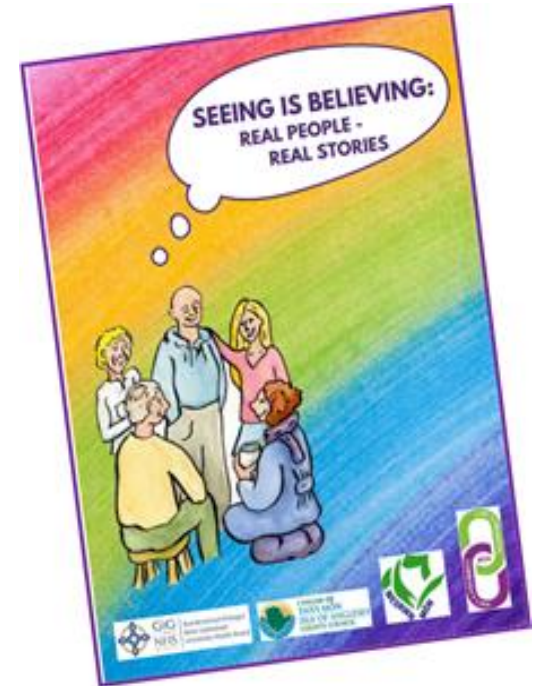


Cymunedau Dyfeisgar

The Building Communities Model

The session will explore how an asset based approach to engaging communities, identifying partnership working opportunities and designing and delivering services has become the most sustainable way of creating resilient communities across Anglesey.

The session will identify how effective partnerships between communities and service providers enables effective provision both for long-term early intervention provision and in times of crisis- particularly the COVID 19 pandemic



Resourceful Communities



Background- The Building Communities Model

- 2013- Community Voice Strategically funded Big Lottery project
- Consultation for the Future Generations Act
- Anglesey Council – better engagement with communities
- Funding context
- Growing conversation about ABCD



Resourceful Communities

The Seiriol Model

- Why Seiriol?
- Who and How?
- **A sense of place**- belonging, ownership and responsibility
- Equal representation and partnership



#BFFSLLANGOED PRESENT
a FILM NIGHT



12A

Friday
24 May 2019
Doors open at 6:15pm
film starts at 7pm
@ Llanggoed Village Hall

£2 donation
All proceeds go towards future events

Refreshments available at a small price
Bar open for adults!

Please reserve your tickets as spaces are limited.
Tickets available at McColl's.
Please contact - 07557808654



Resourceful Communities

The Seiriol Model- Building Communities – Now what?

- Memorandum of understanding and co-operatives
- Employing staff independently
- Self funding community projects
- Pooled budgets across sectors
- The LAC model and Place Shaping

CYNGOR SIR YNYS MÔN ISLE OF ANGLESEY COUNTY COUNCIL

Residents Council Business Get in

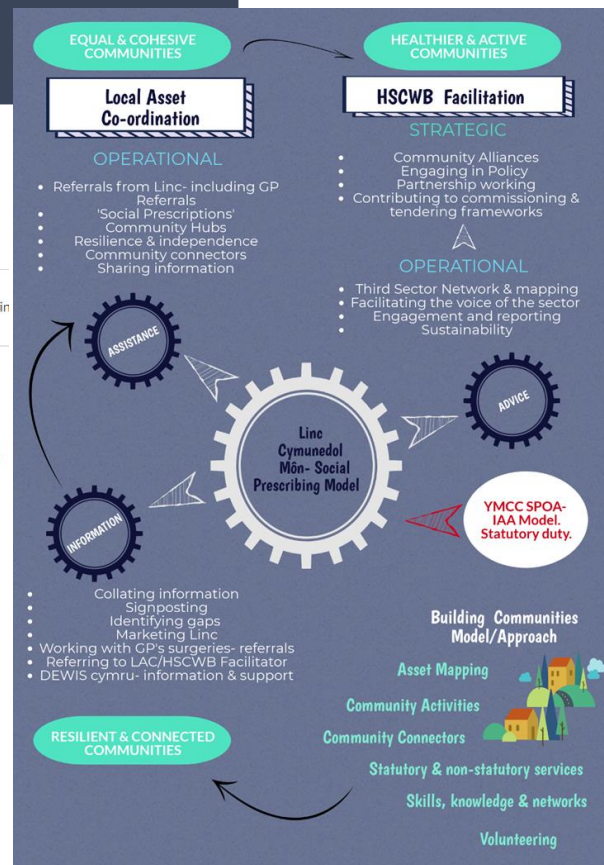
Newsroom / News entry

Partnership working breaks new ground

Posted on 7 June 2019

Share: [Icons]

I-r Anglesey Council Leader, Cllr Llinos Medi; Anglesey's Head of Adult Services, Alwyn Rhys



What did we learn- The vision

- Effective engagement and feedback is key
- Elements of the programme can be used for targeted task and finish- Community Hubs Model
- We must be committed to long-term change
- Conversations must be transparent and be followed up with resources
- Small wins lead to big changes
- Informal is professional!



Community Alliance

What is a Community Alliance?

Over the past year we have been talking to many Anglesey residents about their communities and have pulled together a collection of thoughts and ideas of what your community looks like.

We have been inviting local residents and community groups to meet together with Medrwn Môn to see how we can work together to have a look at what people have said, and how we can work together to make a difference.

We would like you to chose 3 priorities in your area to take forward, from all the information we have gathered so far. There is funding of up to £4,000 to help you do this.

We want to discuss new and exciting plans for the upcoming year for the Llifon Ward - Llanfaelog and Rhosnegir, Llanfair-yn-Neubwll and RAF Valley, Caergellio and Valley.

Get in touch today to find out more by e-mailing Delyth@medrwnmon.org or phoning 01248 724944.

PONT-RHYD-Y-BONT FOUR MILE BRIDGE

Dewch i ymuno hefo ni am dro!
Gadewch i ni wybod sut beth ydy byw yn Pont-Rhyd-y-Bont a'r cyffiniau.

Come join us on a walk!
Let us know what it's like to live in Four Mile Bridge & the surrounding areas.



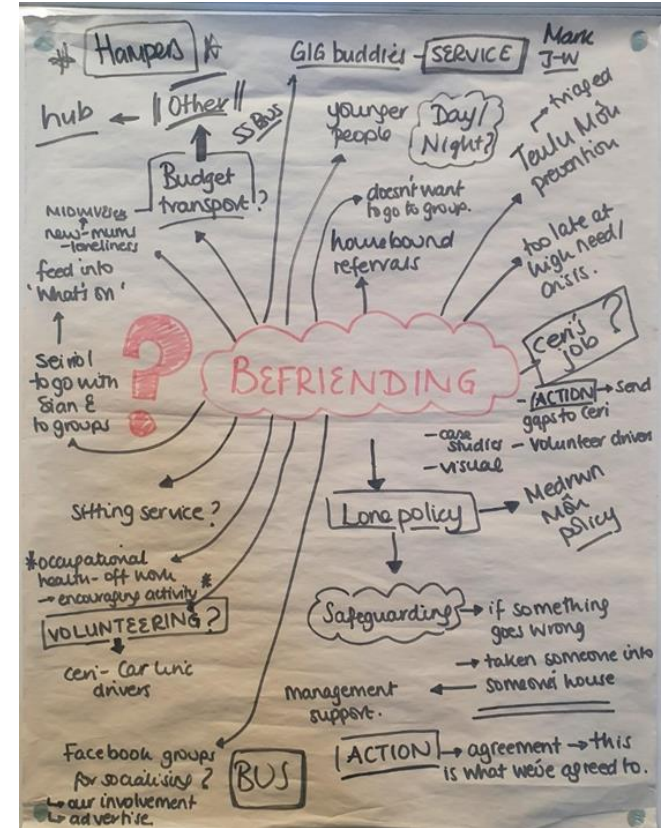
17-11-21: 11:30A.M. - 2 P.M.
TU ALLAN I /OUTSIDE:
FFORDD CARADOC

CYSWLLT/CONTACT
MEDRWN MńN - 01248 724944
NEU/OR E-BOST/-E-MAIL
DELYTH@MEDRWNMON.ORG



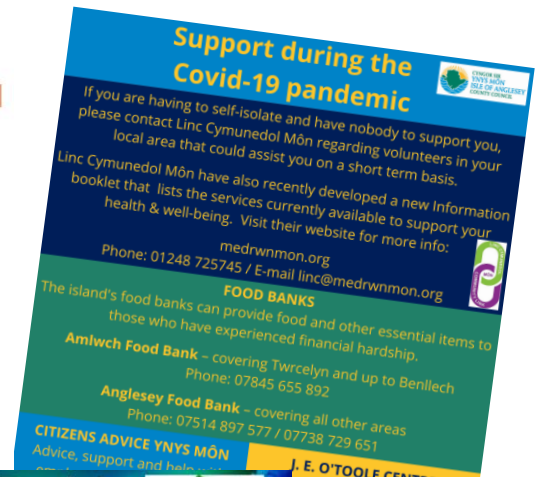
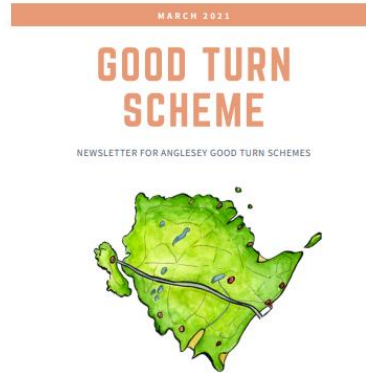
Barriers and opportunities Pre-Covid

- Talking in to action- hesitancy to fully commit
- Place Based v Island wide services
- Challenges in addressing gaps to support community action-
- Agencies understanding, respecting and supporting self –determinism- EVERYONE is equal
- Finance and resourcing that enhances sustainability of programmes and allows flexible growth
- Knowing the landscape- context and derterminents of need



Covid and Resourceful Communities

- Proactive v reactive
- Pace of response
- Governance and planning
- Resources
- Understanding of roles and responsibilities



J. E. O'TOOLE CENTRE
 and confidential advice and
 representation on all State
 Pensions and Pensions, Universal
 Credit, Discretionary Payments
 and Tax Credits.
 We are continuing to
 offer the usual advice services
 such as benefit checks, appeals
 and claim form filling by
 telephone.
 1407 760208 (Mon-Fri)



Vaccine Campaign Offers Hope

Anglesey's Covid-19 vaccination efforts received a huge boost this month as more than 2,000 people were able to have their jabs in a special centre at Ysbyty Penrhos Stanley, Holyhead.
 The centre was set up in only a week thanks to the enormous efforts of hospital staff and the primary care teams.
 The first people from the four priority groups in the Holyhead area had their



Some of the medical staff giving Covid-19 vaccinations to locals at Ysbyty Penrhos Stanley, Holyhead.

As this e-bulletin is sent out, 889,270 people across Wales have received a first dose of the vaccine and 60,854 have had two doses.

Why did the partnership work?

- Allocating funding and targeting resources across sectors
- 'No one gets left behind'
- Reputation to deliver
- Response rate – from community request to active response
- Value of community response in delivering on the ground

Medrwn Môn Community Response Fund

What is the Community Response Fund?

A fund that has been created to support vital community projects as they respond to exceptional challenges to support individuals living on Anglesey. The additional funding is available for projects using creative ways of improving the health and well-being of individuals living on Anglesey during the COVID-19 pandemic.

Who can apply?

You may be part of a new or current support team, community group, or voluntary organisation that needs additional funding to support or add a particular service that you are currently offering.

Grants between £100-£1000

- Buying Equipment**
Encourage people to learn new skills, gardening equipment, sewing equipment, musical instruments etc.
- Develop Local**
Telephone support, essential shopping, walking etc.
- Stay Connect**
Using new and old of helping people to connect.
- Essential Support**
Getting prescriptions, prescriptions to etc.

FOR MORE INFORMATION CONTACT

E derfwyn@medrwnmon.org
W www.medrwnmon.org

Partners: Medrwn Môn, Cymdeithas Yr Ysgol, Cymdeithas Yr Ysgol, Cymdeithas Yr Ysgol, Cymdeithas Yr Ysgol.

Community Fund for Children & Families on Anglesey

Funding was made available by Medrwn Môn in October 2020 to support voluntary organisations and community groups providing vital Covid-19 response support on Anglesey. Groups could apply for up to £5,000, and the applications needed to align with at least one of the '5 WAYS TO WELL-BEING' principles.

This is how the 7 successful projects plan to use the money awarded to them:

- 1. CAPEL GOLEUDY MÔN**
They have created 2,000 family resource packs - distributing them through 13 primary schools and 2 secondary schools across Anglesey. Before Christmas they also posted daily 'Antar Adfer!' Adventure - with the aim of bringing some light and hope to families in difficult times over the Christmas period.
- 2. CLWB CREADIGOL BRYNGWRAN CYMUNEDOL**
The Bryngwrn Good Tam Scheme / Iorwerth Community Hub volunteers run the Bryngwrn Cymunedol Creative Club! to try to raise people's spirits and inspire them through the challenging times of Covid-19. They encourage parents, children and families to share ideas and participate in various activities each month to achieve the five elements of the '5 Ways to Wellbeing'. During the Christmas period 'Creative' packs and Christmas balls were distributed to pupils at 'Ysgol Cymunedol Bryngwrn and local residents to keep everyone busy.
- 3. UCHELDRE CENTRE, HOLYHEAD**
The Ucheldre Centre has been closed since March 2020. When Covid-19 restrictions allow, the Centre will hold 10 hands-on 'Art & 5 Ways to Wellbeing' family sessions. The aim is to achieve the:
 - Observe the wonders of science and nature around them;
 - Connect with each other through family group activities;
 - Exercise creativity and imagination;
 - Have fun learning new things and supporting children's education;
 - Improve well-being through the arts and nature.

Partners: Medrwn Môn, Cymdeithas Yr Ysgol, Cymdeithas Yr Ysgol, Cymdeithas Yr Ysgol, Cymdeithas Yr Ysgol.

GET THERE TOGETHER

The **Get There Together Cymru** project has created short, simple videos showing the main changes to venues and services since the pandemic. The aim is to let people know what to expect as they venture outdoors once again as restrictions are relaxed.

The project is being led by Age Cymru Gwynedd a Môn, with collaboration from Medrwn Môn, Betsi Cadwaladr University Health Board, and Alzheimer's Wales. Feedback so far has shown that the videos have been very effective in supporting people with Dementia and their carers, as well as those living with Autism and other vulnerable adults.

A number of Anglesey videos are available to watch on their YouTube page (as well as on the Dementia Cymru website): https://www.youtube.com/channel/UC9iSiHfCA5cNinsj7Lvy_ssA **videos**

Each video is also available as a printed paper copy. If you would like a paper copy, please contact Sioned Young on **01286 806 735** or sioned.young@acgm.co.uk

The project also welcomes applications from any business or service on Anglesey that wants to get involved - as well as any requests from community members.

Medrwn Môn

The position post COVID

- Preparing for the new normal and designing the most desirable system from a community resourcefulness point of view
- Covid reshaping wellbeing expectations and personal motivations
- Prevention Board & a new focus on Engagement
- Risk of waning community interest and less volunteers
- Managing a change in pressure- staff sickness and our ability to deliver
- Pivoting funding
- Original focus of Building Communities – ‘We gave our communities trust- we can’t take it back’



Pum ffordd at ieu
Five ways to wellbeing



CYNGOR SIR
YNYS MÔN
ISLE OF ANGLESEY
COUNTY COUNCIL



GIG
CYMRU
NHS
WALES

Bwrdd Iechyd Prifysgol
Betsi Cadwaladr
University Health Board

